



HDE
HYDROPOWER
DYNAMICS
ENGINEERING SA

We focus on **modelling, simulation, analysis and optimisation** of hydroelectric power plants with a multiphysics approach including **hydraulic** circuit, **mechanical** systems, **electrical** installations and **control** devices.

—  SWISS ENGINEERING —





HDE
HYDROPOWER
DYNAMICS
ENGINEERING SA

Solutions & expertise in hydropower transients and operation through softwares and engineering services since 2007.

**ENGINEERING
SERVICES**

- Hydroelectric Transient Analysis
- Water Hammer Calculation
- System Stability Analysis
- Control System Optimisation
- Ancillary Services and Grid Code Compliance
- CFD and Complex Flow Simulations

**SOFTWARES &
SEMINAR
TRAININGS**

SIMSEN

Simulation Software for Hydraulic & Electric Systems
Adjustable Speed Drives



Hydro-Clone®

Physically based Digital Twin for Hydro Power Plant Transient Monitoring

HYDRO-CLONE™

MyHPP Simulator

Simulator for Hydro Power Plant Operator Training

MyHPP SIMULATOR



**SIMULATION
SOFTWARE**



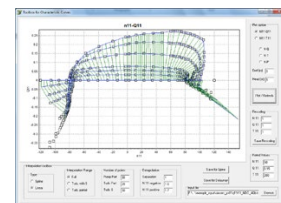
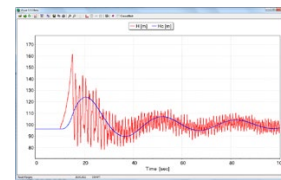
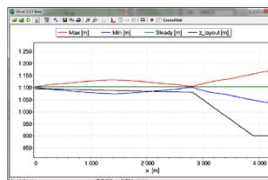
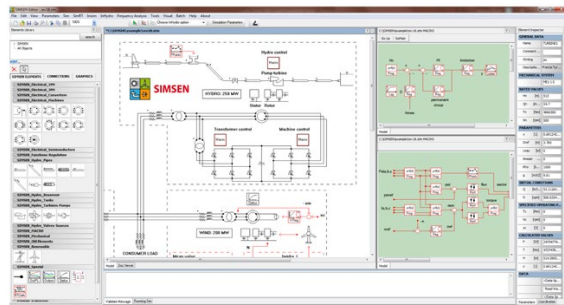
SIMSEN

SIMULATION SOFTWARE FOR HYDRAULIC & ELECTRIC SYSTEMS ADJUSTABLE SPEED DRIVES

- Hydraulic and Electrical Transients
- Water Hammer Calculation
- Hydroelectric Systems
- Power Network Stability
- Complex Drives Control
- Load Flow

FEATURES

- From water to wire modelling
- Electrical + hydraulic system
- Advanced control system
- Variable speed pump-turbines
- Pumped storage transients
- Time + frequency domain analysis
- Eigenvalues + eigenvectors calculation
- Forced response analysis
- Two-phase flows
- Open channel flows
- Francis and Pelton turbine characteristic library
- Reversible Francis pump-turbine characteristic library
- Scripting capability
- FMI co-simulation with external softwares



EPFL

Hydropower Dynamics Engineering is the exclusive distributor of the SIMSEN EPFL software

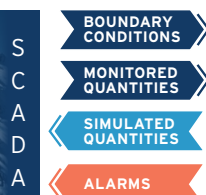
HYDRO-CLONE®



PHYSICS-BASED DIGITAL TWIN FOR HYDRO POWER PLANT TRANSIENT MONITORING

- Digital Twin of Hydroelectric Power Plant
- Real Time Water Hammer/Surge Tank/Unit Transient Monitoring
- Detection of Abnormal Pressure Transients prior to Reach Admissible Limit
- Detection of Anomalies
- Monitoring of Non Measurable Quantities
- Deviation of Hydropower Physical Characteristics
- Ahead of Time Projections of the State of the System (Decision Support Tool, Alert Awareness, What if...?)
- Anticipation of Potential Power Plant Damage
- Penstock Fatigue Monitoring

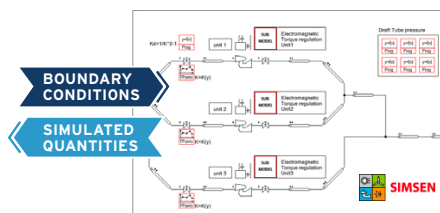
HPP



HYDRO-CLONE®

- ACQUISITION
- SIGNAL PROCESSING
- ARCHIVING SYSTEM
- RT MODEL MANAGER
- ALARM MANAGER

REAL-TIME SIMULATION



ALARM SYSTEM

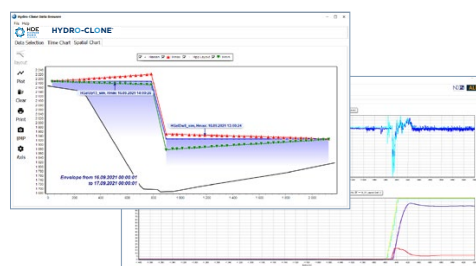
Type 1: Exceedance of the admissible limit of a measured quantity

Type 2: Exceedance of the admissible limit of a non measurable quantity

Type 3: Divergence measurements/simulations

REAL-TIME DISPLAY

DATA ARCHIVE





**SIMULATION
SOFTWARE**

MyHPP SIMULATOR



SIMSEN BASED SOLUTION

SIMULATOR FOR HYDRO POWER PLANT OPERATOR TRAINING

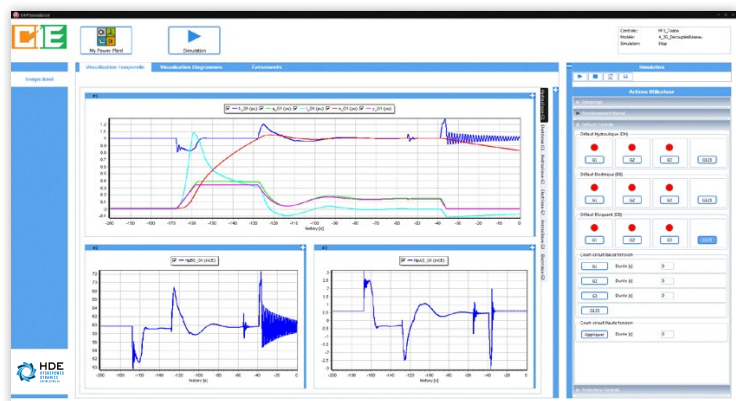
**My HPP Simulator emulates
the operation and dynamics of
a specific hydro power plant
during normal, abnormal and
emergency conditions.**



With My HPP, your operators:

- gain confidence and expertise
- improve awareness of operation risks
- increase knowledge and operator skills

Train your operators internally
with this simulator.





PROJECT
STEPS

01
FEASIBILITY



02
**DETAILED
DESIGN**



03
CONSTRUCTION



04
COMMISSIONING



05
**MAINTENANCE
TRAINING**



ENGINEERING
SERVICES

- Preliminary hydraulic and electric transient analysis
- Hydraulic layout design for PSPP and HPP
- Surge tank sizing
- Hydraulic machine sizing and selection incl. variable speed technology
- System stability evaluation

- Detailed hydraulic and electrical transient assessment
- Hydraulic layout optimisation (1D+CFD)
- Surge tank detailed design and optimisation (1D+CFD)
- System stability evaluation: isolated and islanded grid
- Resonance risk assessment (IEC 62882): part load and full load surge, RSI, Von Karman resonance
- Hydraulic machine transients and dynamic behavior specifications

- Final hydraulic and electrical transient analysis with data from suppliers
- Technical review of hydraulic machine bids
- Hydraulic machine reduced scale mode tests follow-up
- Transposition of pressure fluctuations from model to prototype (IEC 62882)
- Surge tank physical model tests follow-up
- Grid code compliance
- Ancillary services evaluation

- Transient tests specification
- Hydro-Clone® system deployment for hydraulic transient tests follow-up and validations
- Operating sequence optimisation
- Control system parameter optimisation
- Pressure fluctuations assessments
- Determination of final safe operating range of HPP and PSPP

- Long term hydraulic transient monitoring using Hydro-Clone® system
- Hydraulic transients, system dynamics and pressure fluctuations troubleshooting
- Training of plant operators with MyHPP Simulator

SIMULATION
SOFTWARES



HYDRO-CLONE™



HYDRO-CLONE™
MyHPP SIMULATOR



**ENGINEERING
SERVICES**

HYDROELECTRIC TRANSIENT ANALYSIS

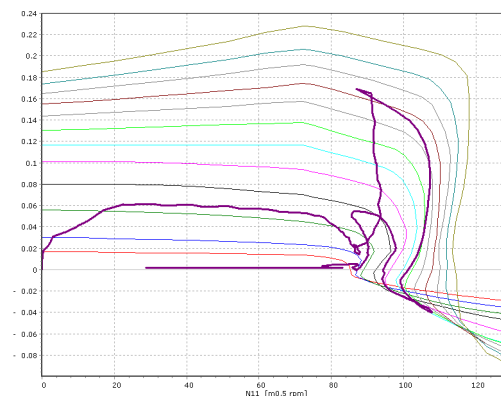
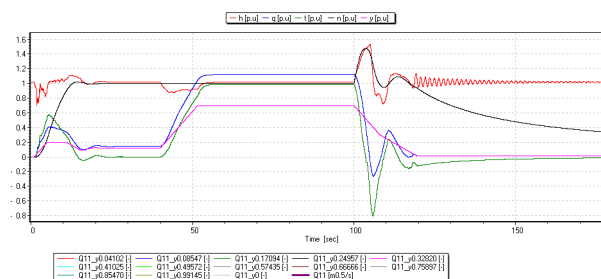
WATER HAMMER CALCULATION

TRANSIENT ANALYSIS

- Hydraulic and electric transient analysis
- Hydraulic layout design and optimisation for PSPP and HPP
- Surge tank design and optimisation
- Penstock protection valve transients
- Air-valve sizing
- Hydraulic short-circuit operation

STABILITY/ RESONANCE ANALYSIS

- Resonance risk assessment according to IEC 62882: part load and full load surge risk, rotor stator interactions (RSI) induced resonance, Von Karman vortex shedding induced resonance (valves, GV, SV)
- Penstock resonance risk assessment
- Follow-up of hydraulic machine reduced scale mode tests and transposition of pressure fluctuations from model to prototype according to IEC 62882 and resonance risk assessment
- Hydraulic system dynamics and pressure fluctuations troubleshooting





ENGINEERING
SERVICES

SYSTEM STABILITY ANALYSIS

ANCILLARY SERVICES & GRID CODE COMPLIANCE

CONTROL SYSTEM OPTIMISATION

POWER NETWORK STABILITY ANALYSIS

- Isolated operation
- Islanded network
- Interconnected grid

ANCILLARY SERVICES ASSESSMENT

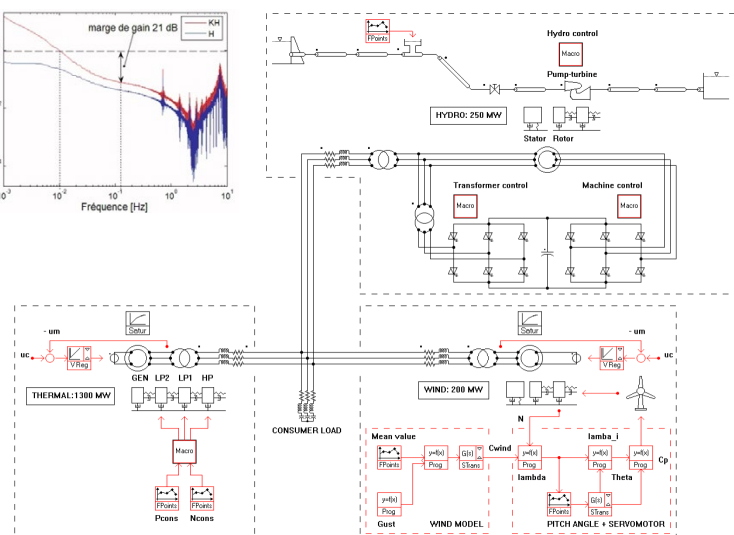
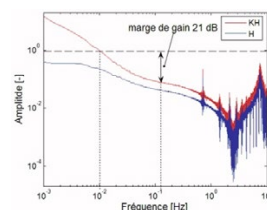
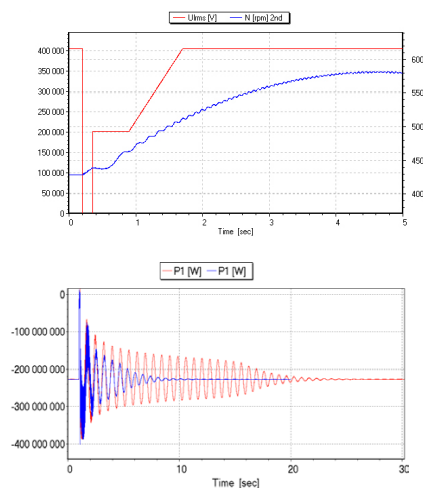
- Primary (FCR) and secondary (aFRR) control capabilities assessment
- Evaluation of penstock fatigue risk
- Variable speed unit contribution to grid stability
- Power System Stabilizer (PSS) optimisation

OPTIMISATION

- Control/command strategy
- Control/command parameters
- Emergency procedures
- Annual production

GRID CODE COMPLIANCE

- Short circuits
- Low voltage ride through (LVRT)
- Ramping rates optimisation
- Primary and secondary control for voltage and frequency control



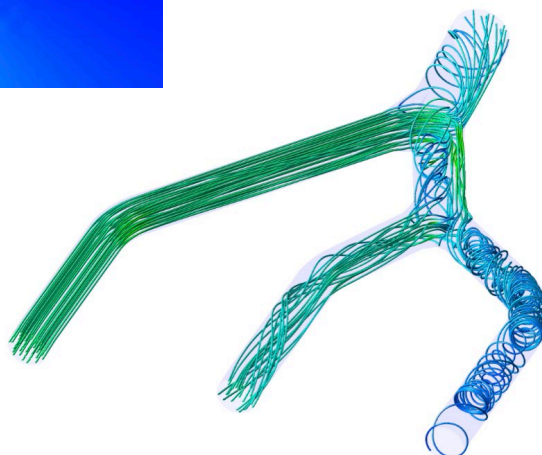
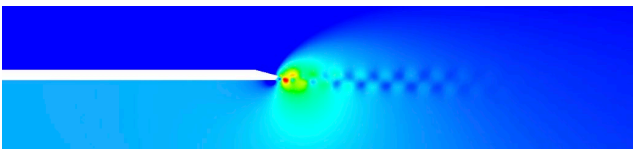
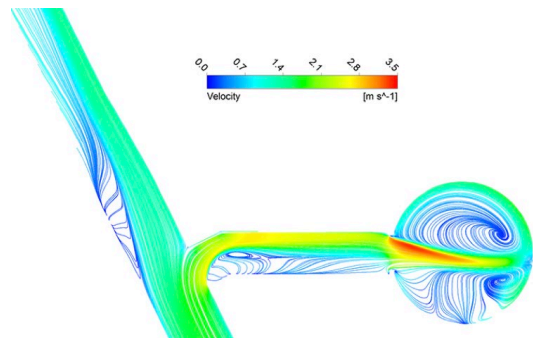
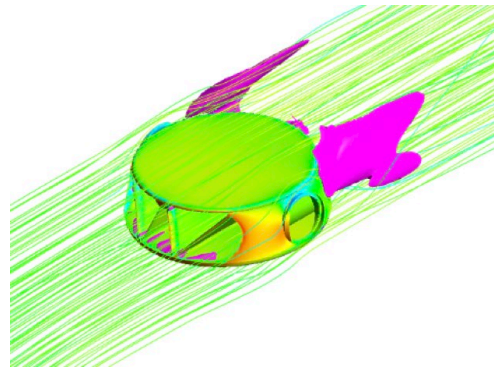
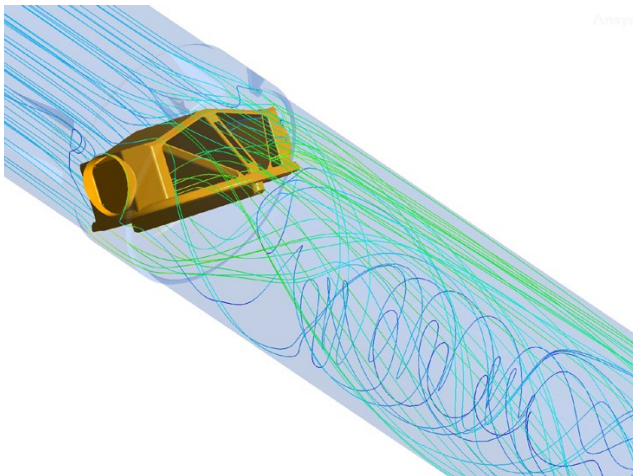


**ENGINEERING
SERVICES**

CFD & COMPLEX FLOW SIMULATION

2D/3D STEADY/UNSTEADY CFD (ANSYS-CFX®)

- Surge tank diaphragm optimisation
- Bifurcations flow stability
- Hydraulic short-circuit operation
- Von Karman vortices
- Part/Full load operation
- Valve torque and discharge characteristics
- Air-valve discharge characteristics





- INNOVATION
- LEADING EDGE RESEARCH & TECHNIQUES
- TECHNOLOGY TRANSFER BETWEEN ACADEMIA & INDUSTRY
- HYDRO EXPERTISE

HYPERBOLE

- HYPERBOLE European Project no. 608'532
- FP7 ENERGY 2013 Programme
- 42 months project (2013-2016)
- 10 partners



SF0E Projects Swiss Federal Office of Energy

- RENOVHydro - Project no. SI/501436-01 (2016-2019)
- SHAMA - Project no. SI/501435-01 (2016-2019)
- SmallFLEX - Project no. SI/501636-01 (2018-2020)
- HydroLEAP - Project no. SI/502106-01 (2020-2024)

CCEM-CH

Swiss Electric Research

- HydroNET II – Project (2013-2016)



- XFLEX HYDRO European Project no. 857832
- Horizon 2020 Framework Programme
- 48 months project (2019-2023)
- 19 partners



InnoSuisse Projects

- Penstock fatigue monitoring -
Project no. 28112.1 PFIW-IW (2018-2020)
- RENOVHydro -
Project no. 19343.1 PFIW-IW (2016-2019)



EPFL



**Technology Platform
for Hydraulic Machines**
CH-1015 Lausanne
Switzerland

EPFL



**Power Electronics
Laboratory**
CH-1015 Lausanne
Switzerland

Hes-so VALAIS
WALLIS
School of Engineering



Hydro Alps Lab
CH-1950 Sion
Switzerland



MC-monitoring S.A.
CH-1762 Givisiez
Switzerland



Mhylab
CH-1354 Montcherand
Switzerland



PROJECTS AROUND THE WORLD

6x 340_{MW}

SNOWY 2.0 PSPP
AUSTRALIA

Transient analysis of SNOWY 2.0 pumped storage power plant equipped with 6x340 MW reversible Francis pump-turbine including 3 variable speed units. Transient analysis verification in pumping and generating mode, and hydraulic layout and surge tanks optimisation.



PHOTO COURTESY OF AND COPYRIGHT TO SNOWY HYDRO LIMITED

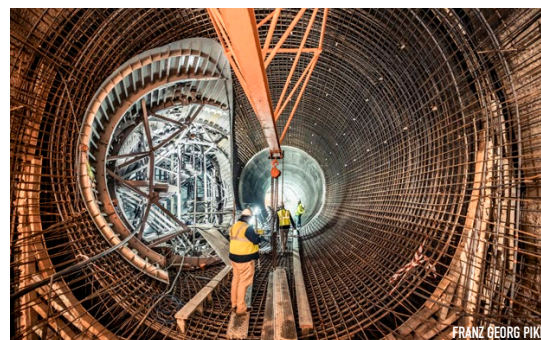


PHOTO COURTESY OF AND COPYRIGHT TO SNOWY HYDRO LIMITED

4x 232_{MW}

GOUVÃES PSPP
PORTUGAL

Transient analysis for 4x232 MW reversible Francis pump-turbines to be operated under a nominal head of 660 mWC, optimisation of upstream and downstream surge tanks.



FRANZ GEORG PIKL

420_{MW}

**FORCES MOTRICES
HONGRIN-LÉMAN SA**
SWITZERLAND

Expertise in hydraulic transient simulations for 240 MW → 420 MW upgrade of Forces Motrices Hongrin-Léman Power Plant, including surge tank modifications and commissioning assistance with Hydro-Clone.



6x 150_{MW}

NANT DE DRANCE PSPP
SWITZERLAND

Transient analysis and CFD computation for hydraulic short-circuit safe operation of Nant de Drance 900 MW pumped storage power plant equipped with 6x150MW variable speed Francis pump-turbines, CFD computation of unsteady 3D flow developing in the downstream bifurcations and commissioning assistance with Hydro-Clone.



3x 423_{MW}

CLEUSON-DIXENCE HPP
SWITZERLAND

Transient analysis for the rehabilitation of 1200 MW power plant with 3 Pelton turbines and ancillary services optimisation.



4x 230_{MW}

MONTÉZIC PSPP
FRANCE

Hydroelectric transient analysis of 930 MW Montézic pumped storage power plant, RTE Grid Code compliance.

185_{MW}

AVČE PSPP
SLOVENIA

Transient analysis of 185 MW variable speed pumped-storage power plant, influence of air vacuum valves and surge tank modifications.





HDE
HYDROPOWER
DYNAMICS
ENGINEERING SA

Hydropower Dynamics Engineering SA
Rue des Jordils 40
CH-1025 St-Sulpice
Switzerland +

Contact +41 21 691 01 21
info@hdynamics.ch
www.hdynamics.ch

